

Comparison of Different Panel
各型地板材料性能比较表

Performance性能	“钢质水泥基地板” Steel cement panel	“钢质空心地板” Steel hollow panel	木质地板 Woodcore panel	硫酸钙基地板 Calcium Sulphate panel	压铸铝地板 Die-casting aluminum panel
Ultimate load极限载荷	A	B	C	D	E
Safety factor安全系数	A	B	C	D	E
Overload protection超载保护	A	B	C	D	E
Fire rating防火性能	A	B	E	A	E
Panel size地板尺寸精确度	B	B	B	B	A
Panel weight(裸板重量)	C	A	A	E	A
Bare panel sound insulation裸板隔音性能	C	C	B	A	E
Walking feeling步行感	A	B	A	A	B
Recycled content回收性原材料比例	B	B	D	A	E
“Support for Green building certificate 绿色建筑申请支持”	B	B	D	A	E
Cost efficiency估计单位成本	A	D	D	B	E
Cutting ease and cost切割难度和切割成本	B	A	A	E	C
Application 用途	Office办公区	A	B	A	A
	Data center数据中心	A	B	D	B
	Education教育区	A	D	A	B
	Casino赌场	A	E	D	A
	Industrial cleanroom洁净厂房	B	E	E	E
Library图书馆	A	C	B	A	E

Note备注:
(1) ZTFLOOR has continuous product and product data improvement. It reserves the right to change type design and specifications without notice.
中天机房公司致力于产品和技术的不断革新,我们保留对产品品种设计和性能的修改且恕不另行通知的权利。
(2) 'A' ——Most advantage最佳, 'E' ——Least advantage最差
(3) The comparison is based on the panels of the same concentrated loading grade. 此对照表基于各品种同等集中载荷的地板。

常州市武进中天机房设备有限公司
CHANGZHOU WUJIN ZHONGTIAN COMPUTER-ROOM EQUIPMENT CO.,LTD
地址:江苏省常州市武进区横林镇卫星工业园 邮政编码:213103
Address: Weixing Industrial Zone, Henglin Town, 213103 Changzhou City, Jiangsu Province, P.R. of China

ZTFLOOR®
中天机房

- ZTFLOOR passes third-part Green Material certificate. Please ask for details through company sales.
中天机房已通过第三方绿色环保建材认证, 请咨询公司业务经理索取相关资料。
- For more new products, please contact ZTFLOOR sales.
更多新产品, 请咨询中天公司业务经理。

http://www.ztfloor.com

朝晖® ZTFLOOR®



ACCESS FLOOR SYSTEM 高架活动地板(2017版)



ZTFLOOR®
中天机房

常州市武进中天机房设备有限公司
CHANGZHOU WUJIN ZHONGTIAN COMPUTER-ROOM EQUIPMENT CO.,LTD

ZTFLOOR®
中天机房



COMPANY PROFILE 公司简介

As one of the largest access floor manufacturers and exporters in China, in 2016, ZTFLOOR has supplied over 2 million square meters of access floor in commercial office buildings, data centers, educational facilities, the casinos, clean rooms and libraries.

The company is expanding with plant area over 60,000 square meters and 200 staffs. The main products include access floor system, data center products, underfloor air conditioning and underfloor wiring.

ZTFLOOR leverages its 28 years of experience in the industry to provide support to customers by its high efficiency, energy conservation, intelligence and green spaces products.

常州市武进中天机房设备有限公司成立于1988年, 现有员工200人, 工厂面积约6万平方米。公司主营高架活动地板系统产品的设计、生产、销售和施工。产品系列涵盖架空活动地板, 数据中心产品, 地板送风空调系统和地板电器电缆产品四大系统。公司积极打造产品和服务平台, 以提升客户价值为信念, 为全球活动地板用户创造高效、节能、智能、绿色空间提供整体解决方案。作为国内最大的活动地板系统产品供应商和出口商之一, 公司每年出库约200万平方米活动地板材料和系统产品, 产品用途包括办公楼、数据中心、教育区、赌场、洁净厂房和图书馆等。



ZTFLOOR®
中天机房

CERTIFICATES 认证证书



本公司执行中国SJ/T10796-2001产品标准, 关于不同测试标准的产品规范和检测报告, 比如KS, JIS, CISCAS, MOB, EN12825等请向中天公司另行索取。

The company carries out Chinese standard of SJ/T10796-2001 for all products. Other specifications and tests of different standards such as KS, JIS, CISCAS, MOB and EN12825 are also available.

STEEL CEMENTITIOUS PANEL

全钢高架活动地板



ISO 9001 CE PSB Intertek SGS

ZT50 OA PANEL ZT50 OA 地板



Structure

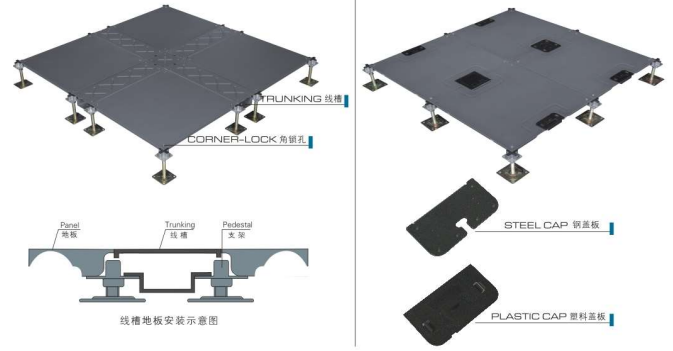
ZT50 OA panel is made of steel plate, top to be SPCC material, bottom to be ST14 material, after pan formed and joined together by resistance welding, the panel is coated with epoxy paint, then infilled with light cement. ZT50 OA地板采用SPCC硬质冷轧板，底部采用ST14拉伸板，经拉伸、点焊、磷化、喷漆后，内腔填充轻质发泡水泥而成，四角带有角锁孔。

Product property

Panel weight : 8-12kg/pc
ASTM E136-11 and BS476-4: Non combustible
ASTM E84-14: Class A
EN13501: Class A1
ASTM E492-09: IIC58
ASTM E283-04 25Pa: $\leq 0.3L/s \cdot m^2$
NIOSH9002: Asbestos-free
LEED assessment report



地板自重8-12KG/片
ASTM E136-11和BS476-4不可燃
ASTM E84-14防火A级
EN13501-1防火A1级
ASTM E492-09隔音等值IIC58
ASTM E283-04 25Pa漏风值小于0.3L/s·m²
(配中天机房横梁控制)
NIOSH 9002 无石棉成分检出
提供LEED贡献值第三方评估报告



Wire Trunking System

A workstation can be easily and quickly relocated with cable management without disruption. Convenient for connecting wire at any point without cutting floor. Suitable for all kinds of plug socket terminals. Adjustable wire-connected location.

线槽地板可根据使用要求任意添加线槽，布线更具灵活性，可以将强弱电分开隔离。便于检修、节约大楼空间，突出智能化、电板的功能性。



Type 型号	Size 尺寸	Concentrated 集中载荷	Impact Load 冲击载荷	Ultimate Load 极限载荷	Uniform Load 均布载荷	Rolling Load 滚动载荷N	Standard 标准	
International	国内型号	mm	N	N	N	N/M	10次 10000次	
SC688	HDG500 28GD	500 × 500 × 28	≥3000	670	≥9000	≥12500	2200 1500	SJT 10796-2001
SC800	HDG500 28GD	500 × 500 × 28	≥3600	670	≥10800	≥19800	3000 2200	
SC1000	HDG500 28BD	500 × 500 × 28	≥4500	670	≥13500	≥23300	3600 3000	

STEEL CEMENTITIOUS PANEL

全钢高架活动地板



ISO 9001 CE PSB Intertek SGS

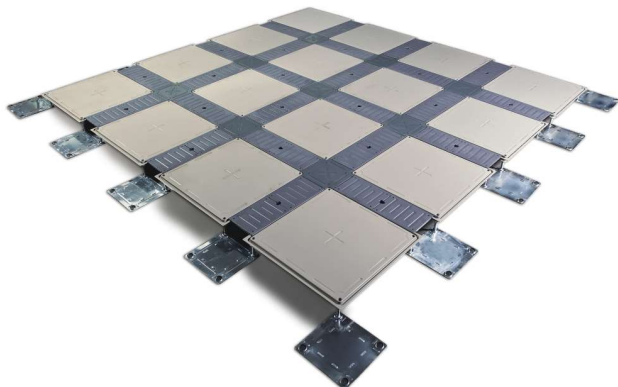
ZT50-B PANEL ZT50-B型扣槽网络地板



Structure

ZT50-B panel is elevated innovation and breakthrough, comparing with traditional access floor system. The new ZT50-B series has the same advantage of ZT50 panel, but more convenient, environmental protected. Now it is widely used in Japan, Qatar, Bahrain, Korea and other countries.

ZT50-B型扣槽网络地板是对传统网络地板的突破与创新。除具有普通ZT50地板的优点之外，它使用范围更广，安装更方便，更环保。目前在日本、卡塔尔、巴林、韩国被广泛应用。



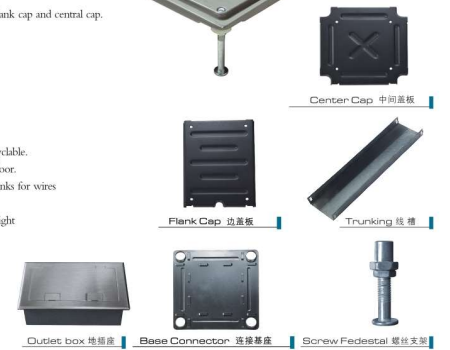
Product Description

ZT50-B panel is supported by 4 pedestals and flank cap and central cap. ZT50-B扣槽地板由支架和盖板组成。



Feature

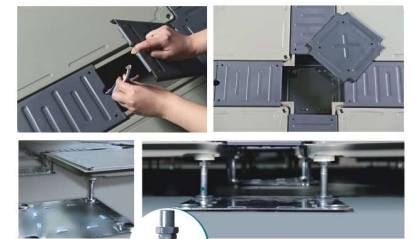
- Environmental protected, economical and recyclable.
- Light weight, 1/2 to 2/3 of common access floor.
- Good conductivity and air leakage, flexible trunks for wires and cables.
- Specially designed for low finished flooring height
- 绿色环保，回收性能好
- 重量轻，只有普通地板的1/2到2/3
- 导电性能和透气性好，便于布线
- 特别为低完成高度设计



Trunking

Trunking for wires is one of the advantages of ZT trunking floor. Cover flank covers on basic panel edges after lying wires in trunks. Each panel stands separately, making it very convenient to lie flank cover before or after wires.

地板线槽系统:此系统为产品的重要功能之一，此功能能达到现有的任何一款其它网络地板系统无法达到的效果。前述线槽安装自然成型后，可先将盖板安装，或布线完成后安装盖板。由于每块地板为独立支撑，故先布线或后布线都很方便与安全。



Type 型号	Size 尺寸	Concentrated 集中载荷	Impact Load 冲击载荷	Ultimate Load 极限载荷	Uniform Load 均布载荷	Rolling Load 滚动载荷N	Standard 标准	
International	国内型号	mm	N	N	N	N/M	10次 10000次	
SC688	HDG500 25GD	500 × 500 × 25	≥3000	670	≥9000	≥12500	2200 1500	SJT 10796-2001
SC800	HDG500 25GD	500 × 500 × 25	≥3600	670	≥10800	≥19800	3000 2200	
SC1000	HDG500 25BD	500 × 500 × 25	≥4500	670	≥13500	≥23300	3600 3000	

STEEL CEMENTITIOUS PANEL

全钢高架活动地板



CE PSB Intertek SGS

ZT60 OA PANEL ZT60 OA地板



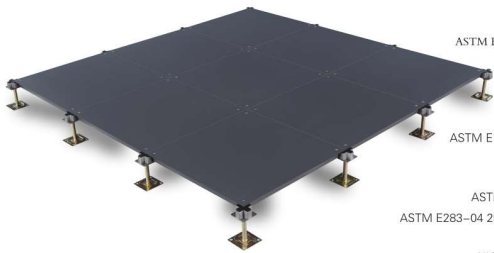
Structure

ZT60 OA panel is made of steel plate, top to be SPCC material, bottom to be ST14 material, after pan formed and joined together by resistance welding, the panel is coated with epoxy paint, then infilled with light cement.

ZT60 OA地板由冷轧钢板和拉伸钢板构成, 板内填充轻质发泡纯水泥。用宝钢板经拉伸、点焊、磷化、喷漆做成, 内腔填充发泡水泥, 带有角锁孔。

Product property

Panel weight : 12-22kg/pc
 ASTM E136-11 and BS476-4: Non combustible
 ASTM E84-14: Class A
 EN13501: Class A1
 ASTM E492-09: IIC58
 ASTM E283-04 25Pa: $\leq 0.3L/s \cdot m^2$
 NIOSH9002: Asbestos-free
 LEED assessment report

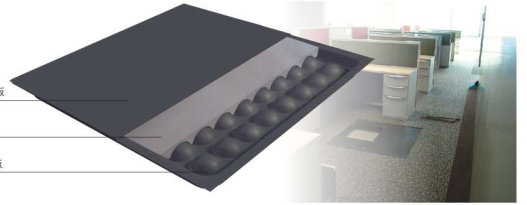


地板自重12-22KG/片
 ASTM E136-11和BS476-4不可燃
 ASTM E84-14防火A级
 EN13501-1防火A1级
 ASTM E492-09隔音等级IIC58
 ASTM E283-04 25Pa漏风值小于0.3L/s·m²
 (配中天机房横梁控制)
 NIOSH 9002 无石棉成分检出
 提供LEED贡献值第三方评估报告

SPCC steel SPCC冷轧硬板

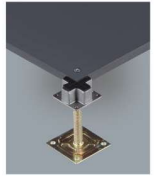
Light cement 发泡水泥

ST14 steel ST14拉伸钢板



Structure

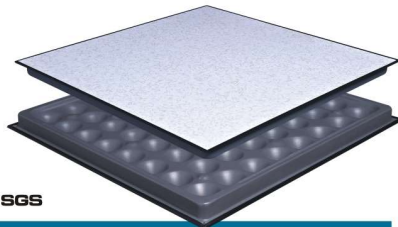
- Screw down design supports the system effectively and makes the installation easily and stable.
- The load is transferred directly onto the center of pedestal column.
- Different types of understructures are available for install OA panel system.
- 角锁孔连接使地板安装更稳固, 更好地支撑地板系统。
- 地板承载力通过角铝支架均匀分散。
- 有不同种类支架系统可供选择安装OA地板。



Type	Size	Concentrated	Impact Load	Ultimate Load	Uniform Load	Rolling Load	Standard
型号	尺寸	集中载荷	冲击载荷	极限载荷	均布载荷	10次 滚动载荷N	标准
SC688	HDG600 35QD 600 × 600 × 35	≥3000	670	≥9000	≥12500	2200	1500
SC800	HDG600 35QD 610 × 610 × 35	≥3600	670	≥10800	≥19800	3000	2200
SC1000	HDG600 35RD 600 × 600 × 35	≥4500	670	≥13500	≥23300	3600	3000
SC1250	HDG600 35ZD 600 × 600 × 35	≥5600	670	≥16800	≥33100	4500	3600
SC1500	HDG600 35ZD 600 × 600 × 35	≥6700	670	≥20100	≥42600	5600	4500
SC2000	HDG600 35ZD 610 × 610 × 35	≥8900	780	≥26700	≥49800	6700	5600
SC2500	HDG600 35ZD 610 × 610 × 35	≥11100	780	≥33300	≥58300	8900	6700
SC3000	HDG600 35ZD 610 × 610 × 35	≥13300	880	≥39900	≥66900	11100	8900

STEEL CEMENTITIOUS PANEL

全钢高架活动地板



CE PSB Intertek SGS

LAMINATE PANEL 贴面地板

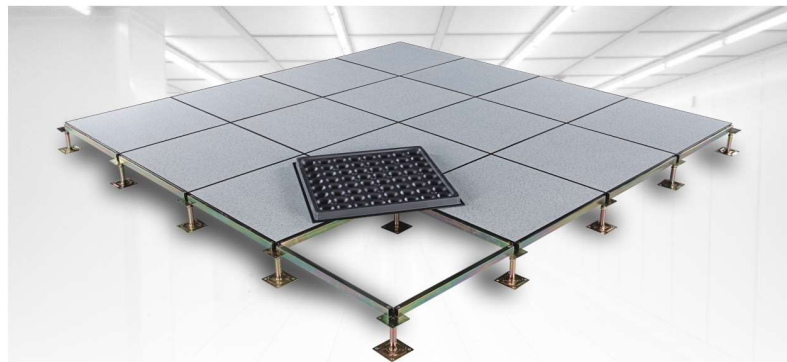


Feature

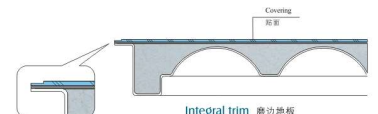
- Used for computer room, data center and communication center
- Excellent rolling load & ultimate load performance
- Light weight cement makes panels solid and quiet
- Black/grey epoxy paint finish for long time protection
- Class A flame spread and smoke development rating
- Convenient installation supplies an excellent solution for office integrity, wiring and data cable service
- 适用于计算机房、数据中心、通讯中心
- 滚动载荷与极限载荷强
- 轻质水泥填充
- 黑/灰色喷塑美观且使用寿命长
- 防火A级
- 便于安装、布线, 维护机房整体性

Wide range finishes available 贴面材料

- High Pressure Laminate
- Conductive vinyl tile
 - Ceramic
 - Carpet tile
 - Linoleum
- Granite/Marble
- 防火板
- 导电PVC
 - 瓷砖
 - 地毯
 - 亚麻地材
 - 花岗岩/大理石



F-trim edge F型边条地板



Integral trim 磨边地板



C-trim edge C型边条地板

CALCIUM SULPHATE ACCESS FLOOR

硫酸钙高架地板



ENCAPSULATED PANEL 全包硫酸钙地板

Structure

Encapsulated with high density fiber calcium sulphate core.
结构: 全包硫酸钙地板由上下镀锌钢板和高密度硫酸钙基材构成。

Product property

Panel weight: 10-22kg/pc
Panel thickness: 25-40mm
EN12825 dimension tolerance: 1
EN13501: Class A1
EN1366-6 fire rating: 2hours
ASTM E492-09: IIC55
ASTM E283-04 25Pa: $\leq 0.3L/s \cdot m^2$
NIOSH9002: Asbestos-free
QBIT 2591-2003: Antibacterial
LEED assessment report

地板自重10-22KG/片
地板厚度25-40mm
EN12825尺寸公差1级
EN13501-1防火A1级
EN1366-6 耐火等级2小时
ASTM E492-09 隔音等级IIC55
ASTM E283-04 25Pa漏风值小于 $0.3L/s \cdot m^2$
(配中天机房定制横梁)
NIOSH 9002 无石棉成分检出
QBIT 2591-2003 抗菌抗菌
提供LEED贡献值第三方评估报告

Type	Size	Concentrated	Impact Load	Ultimate Load	Uniform Load	Rolling Load	Standard
型号	尺寸	集中荷载	冲击荷载	极限荷载	均布荷载	滚动荷载N	标准
International	mm	N	N	N	NM ²	10次 10000次	SJT
C1000	500 × 600/600 × 600/610 × 610	≥4500	670	≥13500	≥23300	3600 3000	10796-2001
C1250	500 × 800/800 × 600/610 × 610	≥5600	670	≥16800	≥33100	4500 3600	

CALCIUM SULPHATE ACCESS FLOOR

硫酸钙高架地板

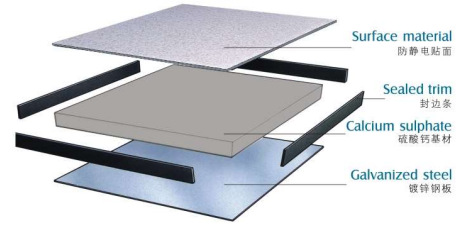


ABS SEALED PANEL ABS封边

Structure

With high density calcium sulphate core, panel surface can be laminated with HPL, conductive PVC, bottom with quality galvanized steel/aluminum foil, four sides with conductive ABS edging.

地板采用高密度硫酸钙基材, 表面可粘防静电HPL、导电PVC, 底面采用优质镀锌板(或铝皮)封底, 四周采用导电条封边。



Application

Anti-static calcium sulphate raised floor is widely used in telecommunication room, power station, computer room, factory clean room and other anti-static requiring places.

广泛应用于电信, 电力电子, 微电子, 医学等行业的程控机房, 计算机机房, 电力调度室, 洁净净化厂房等要求防静电场所。



GRC FLOOR

GRC地板



GRC FLOOR GRC 地板



Structure

GRC地板以优质水泥为主要原料, 再配以加强纤维, 不仅保持了原料本身优越的耐火性, 更提高了成品的承载性。由于表面未采用金属材料, 因此在脚感上更接近于实体楼板, 营造出脚踏实地的感觉。
GRC地板体积小、自重轻, 不仅在施工时可更为便捷, 更可使架空地板系统自重对楼板产生的复合, 使得楼板的使用寿命更为持久。
地板块更加轻薄, 加之系统高度可调节, 提高地板下布线的空间利用率。安装简便, 尺寸精准, 地板之间可任一呼吸。环保材料, 可回收再利用, 节省资源, 保护环境。

GRC floor uses high quality cement and gypsum powder as main raw materials, combined with reinforcing fiber, not only keep the raw material itself superior fire resistance, more raised the bearing of products. Because the floor did not use a metal material on the surface, the floor feeling is closer to the floor entity and creates a down to earth feel.

GRC floor small size, light weight, not only can be more convenient in the construction, but also reduces the load of the raised floor system to the floor, making the service life of the floor more durable.

GRC floor plate is more light, combined with adjustable height, improves the space utilization of underfloor wiring. Easy installation, high dimension accuracy and excellent interchangeability. Recyclable, save resources and protect the environment.

Type	Size	Concentrated	Impact Load	Ultimate Load	Uniform Load	Rolling Load	Standard
型号	尺寸	集中荷载	冲击荷载	极限荷载	均布荷载	滚动荷载N	标准
International	mm	N	N	N	NM ²	10次 10000次	SJT
GC098	500 × 500 × 26	≥3000	670	≥9000	≥12500	2200 1500	10796-2001
GC300	500 × 500 × 26	≥3600	670	≥10800	≥19800	3000 2200	
GC1000	500 × 500 × 26	≥4500	670	≥13500	≥23300	3600 3000	

GRC FLOOR

GRC地板



GRC FLOOR

GRC 地板



Feature

- 全封闭结构, 密封性强;
- 承载力、抗冲击性能高;
- 表面平整度、外形尺寸精确度高, 地板可任意互换;
- 阻燃、隔热、隔声、防菌等性能好;
- 外表整齐美观、装饰性强、行走脚感舒适。

- Full steel encasement and good sealing.
- Constituted by all steel sheet, good loading capacity.
- High dimension accuracy and excellent interchangeability.
- Water-proof, fire-proof, antiseptic and sound insulation.
- Elaborated made and good decorative effect.

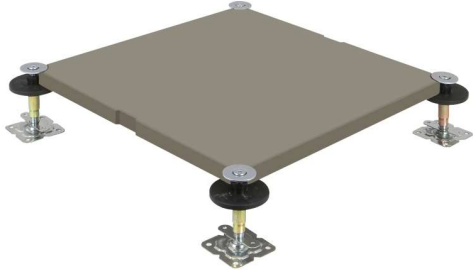


FRC FLOOR FRC地板

ISO 9001 CE PSB Intertek SGS



FRC FLOOR FRC地板



Structure

FRC是由硅酸盐、无机纤维、矿物纤维、石英砂等材料经过高压一次成型的新一代绿色环保网络地板。

该地板无任何挥发性有毒物质及辐射，可以完全被分解，使用年限与楼宇相同。

每块地板自带穿线孔，地板四角镀锌底座支撑，不带横梁系统。

安装后平整度高，无发软的感觉，其表面铺设材料可用强化地板、PVC、方块地毯等。

FRC access floor is made of silicate, inorganic fiber, mineral fiber, quartz sand, etc, once molded after high pressure.

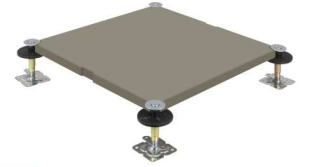
The panel has no volatile toxic chemicals and radiation, and can be decomposed completely. Its service time is the same as the building.

Each panel has hole for wires, four corners supported by pedestals, with no stringers.

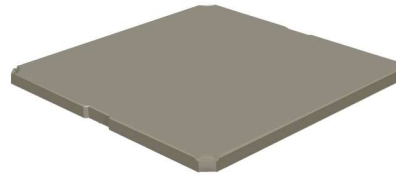
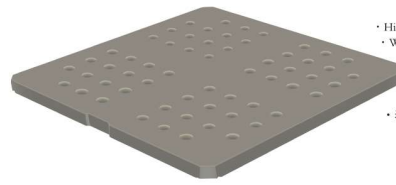
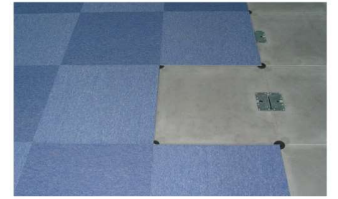
Good flatness and solid feeling. Finishes can be laminate flooring, PVC, carpet, etc.

Type 型号	Size 尺寸	Concentrated 集中载荷	Impact Load 冲击载荷	Ultimate Load 极限载荷	Uniform Load 均布载荷	Rolling Load 滚动载荷N	Standard 标准
International	mm	N	N	N	NM ²	10次 10000次	SJT 10796-2001
FC688	500 × 500 × 25	≥3000	670	≥9000	≥12500	2200 1500	

FRC FLOOR FRC地板



FRC FLOOR FRC地板



Feature

- Full steel encasement and good sealing.
- Constituted by all steel sheet, good loading capacity.
- High dimension accuracy and excellent interchangeability.
- Water-proof, fire-proof, antiseptic and sound insulation.
- Elaborated made and good decorative effect.
- 全封闭结构、密封性强；
- 承载力、抗冲击性能高；
- 表面平整度、外形尺寸精确度高，地板可任意互换；
- 阻燃、隔热、隔声、防腐等性能好；
- 外表整齐美观、装饰性强、行走脚感舒适。

WOODCORE ACCESS FLOOR 木质高架活动地板

ISO 9001 CE PSB Intertek SGS



ABS SEALED PANEL ABS封边



Structure

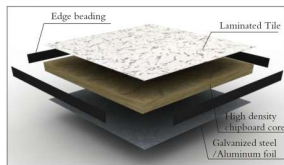
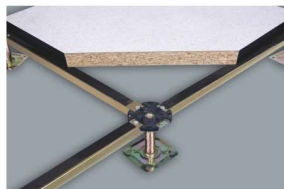
Woodcore access floor consists of high-density(720Kg/m³) chipboard, Galvanized steel sheet/aluminum foil is bonded to the bottom of the chipboard. HPL or PVC is stuck to the top of the chipboard, four edges are sealed with ABS edging strip.

地板采用高密度阻燃刨花板(720Kg/m³)基材，表面可粘贴防静电HPL、导电ABS，底面采用优质镀锌板(或铝皮)封底，四周采用导电胶条封边。

Product property

Panel weight : 5-15kg/pc
Panel thickness: 20-40mm
EN12825 dimension tolerance: 2
EN1366-6 fire rating: 15minutes
EN ISO140-12 sound insulation: 50

地板自重5-15kg/片
地板厚度20-40mm
EN12825 尺寸公差2级
EN1366-6耐火等级15分钟
EN ISO140-12隔音等级50



Type 型号	Size 尺寸	Concentrated 集中载荷	Impact Load 冲击载荷	Ultimate Load 极限载荷	Uniform Load 均布载荷	Rolling Load 滚动载荷N	Standard 标准
International	mm	N	N	N	NM ²	10次 10000次	SJT 10796-2001
W400	500 × 500/600 × 600/610 × 610	≥1800	410	≥5400	≥9800	1200 700	
W688	500 × 500/600 × 600/610 × 610	≥3000	670	≥9000	≥12500	2200 1500	
W800	500 × 500/600 × 600/610 × 610	≥3600	670	≥10800	≥19800	3000 2200	
W1000	500 × 500/600 × 600/610 × 610	≥4500	670	≥13500	≥23300	3600 3000	

WOODCORE ACCESS FLOOR 木质高架活动地板

ISO 9001 CE PSB Intertek SGS



ENCAPSULATED PANEL 多层包边木地板



Structure

Floor panel is encapsulated to provide full steel encasement, steel to be high quality galvanized steel sheet as top and bottom. High density chipboard as the core.

结构：基材用高密度刨花板，上、下采用优质镀锌钢板包边，地板四周镀锌钢板经冲压焊接而成。

Galvanized steel 镀锌板

Chipboard core 高密度刨花板

Galvanized steel 镀锌板



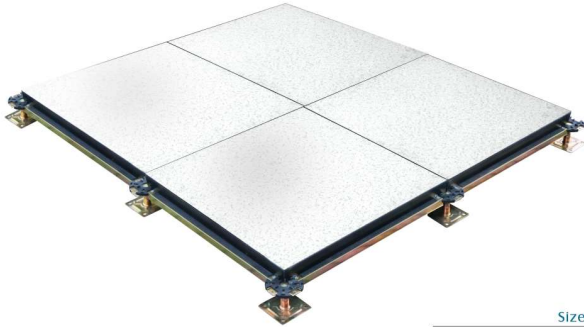
ALUMINUM HONEYCOMB ANTI-STATIC PANEL

铝蜂巢防静电地板



ALUMINUM HONEYCOMB ANTI-STATIC PANEL

铝蜂巢防静电地板



Size
600×600×30mm

Structure

Aluminum honeycomb anti-static floor is a composite raised movable floor with full metal. Aluminum honeycomb structure is inside. Customers can choose HPL cover according to their need. Margins are fixed with black conductive edge strip.

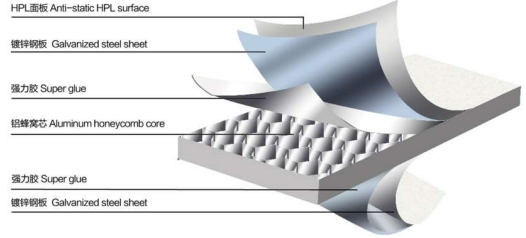
铝蜂巢防静电地板为全金属复合架空活动地板，中间由铝蜂巢填充，表面可根据用户需要粘HPL面材，边缘采用黑色导电边条封边与贴面固定。



Feature

- Anti-static property, economical anti-wear, interchangeable
- Standard floor component, good dimension accuracy, easy to install and replace
- High load structure, good surface smoothness, adjust the height according to your need
- Double shockproof beams in special height, can adjust the form of supporting
- Light product, flame retardant, sound insulation, heat insulation, moistureproof, anti-corrosive, fire prevention, durable and easy to transport
- Green environmental protection, recyclable, can be used for second time

- 具有防静电、美观、大方、经济耐磨、维修方便的特点
- 地板构件标准化、尺寸精准度高，易施工及更换
- 高负载结构设计，平整性好，高度可按需调整
- 特殊高度需双层防震横梁，可调整支撑方式
- 产品轻质、阻燃、隔音、隔热、防潮、防锈、防火、耐用、易运输
- 产品绿色环保、可回收、可二次利用



Application

Anti-static access floor is widely used in computer center, communication center, data center, the power station, broadcasting station, microwave communication station, satellite ground station, mobile communication center, program-controlled telephone exchange center, radio and television editorial room and other professional editorial command room. And it is suitable to be in rooms of integrated circuits, such as instruments workshops of computer, telecommunications, electronics and optics. And also suitable for using in hospital operation rooms, anesthetic rooms, electronic imaging examination rooms and other electrostatic sensitive industry like military, petrochemical and other inflammable places as entertainment center, starred hotel, intelligent office and so on.

广泛应用于计算机中心通讯中心、数据中心、广播电视发射中心、电力控制调度中心、微波通信站、卫星地面站、移动通信、程控电话交换、电视台台编辑控制等各类专业机房，采用电路等计算机、通讯、电子、光学设备生产车间、医院手术室、麻醉室、电子影像检查室及其他对静电敏感的军工、石化等易燃易爆场所和文化娱乐中心、星级酒店、智能化写字楼等。

ALUMINUM ACCESS FLOOR

铝合金高架地板



Feature

Aluminum access floor is die-casting with aluminum ingot which is light and anticorrosion. Aluminum access floor is widely used in the Aerospace Center, Military Command Headquarter, Data Center and Clean Room.

压铸铝合金地板质地轻巧，耐腐蚀。广泛的应用于航天中心，军事指挥中心，数据中心和洁净室。

Type	Material	Size	Concentrated	Impact Load	Ultimate Load	Uniform Load	Rolling Load	Standard
型号		尺寸	集中载荷	冲击载荷	极限载荷	均布载荷	滚动载荷N	标准
International		mm	N	N	N	NM ²	10次	10000次
A1250	ADC12	600×600	≥5800	670	≥11200	≥33100	4500	3800
A1500	ADC12	600×600	≥6700	670	≥13400	≥42600	5600	4500
A3000	ADC12	600×600	≥13300	880	≥26600	≥66900	11100	8900
		610×610						

FLOORING ACCESSORIES

高架地板配件



"ZTFLOOR" presents an extensive choices of accessories, including electrical boxes, grommets, panel lifters and air diffuser and so on.

中天机房提供配件，如走线盒、电插座、支架胶水等。



UNDER STRUCTURE 支架系统



Stringers 横梁

Stringers provide lateral resistance to heavy rolling loads & seismic loading.
横梁可提升滚动载荷和抗震载荷。



Heavy pedestal 重型支架



Cross head pedestal 铝头/铁头支架



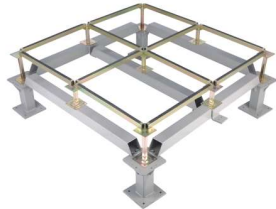
Flat head pedestal 平头支架



Round head pedestal 圆头支架

Finished flooring height (FFH) from 80mm to 2,000mm is available, with high loading strength.

*“朝晖”牌地板和“ZTFLOOR”牌地板支架高度可以定做，完成高度80mm到2,000mm。



Seismic pedestal 防震支架系统

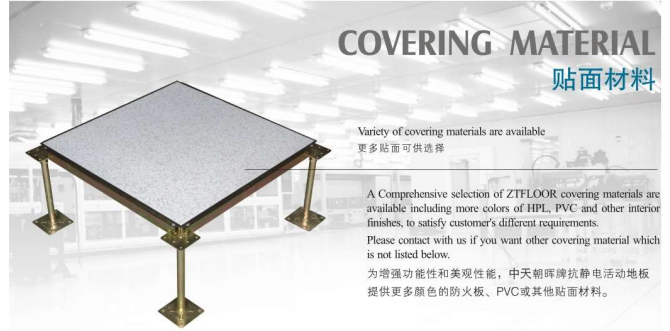


Ramp pedestal 斜坡支架 Pedestal bracing 斜支撑



Bracing clamp 抱箍

COVERING MATERIAL 贴面材料

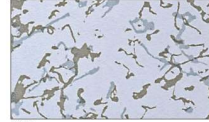


Variety of covering materials are available
更多贴面可供选择

A Comprehensive selection of ZTFLOOR covering materials are available including more colors of HPL, PVC and other interior finishes, to satisfy customer's different requirements.
Please contact with us if you want other covering material which is not listed below.

为增强功能性和美观性能，中天朝晖牌抗静电活动地板提供更多颜色的防火板、PVC或其他贴面材料。

High Pressure Laminate(HPL) 防火板



8192



8193



8194



8191



8132



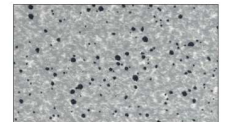
8120



8194-1



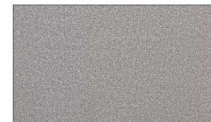
8144



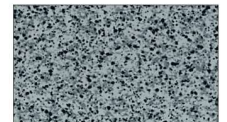
8138



8137



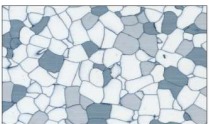
8119



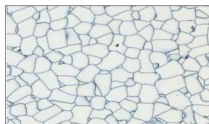
8117

COVERING MATERIAL 贴面材料

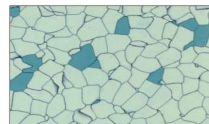
Conductive PVC tile 导电PVC地砖(10⁻¹⁰ohms)



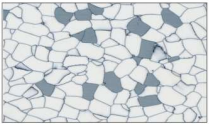
ZT-1101



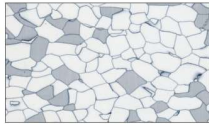
ZT-1103



ZT-02



ZT-04

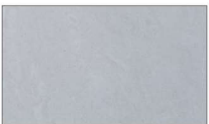


ZT-909



ZT-9022

Ceramic tile 陶瓷



5001



5002



5003

Homogeneous vinyl 弹性透心面材



2058



2062



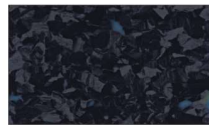
2070



2073



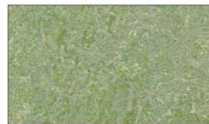
2072



2050

COVERING MATERIAL 贴面材料

Linoleum 环保亚麻



3881



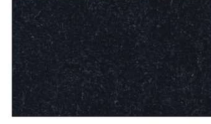
3846



3856



3858



3872



3825

Timber 木纹贴面



4801



4802



4803



4804



4805



4806

Granite 大理石



莆田锈

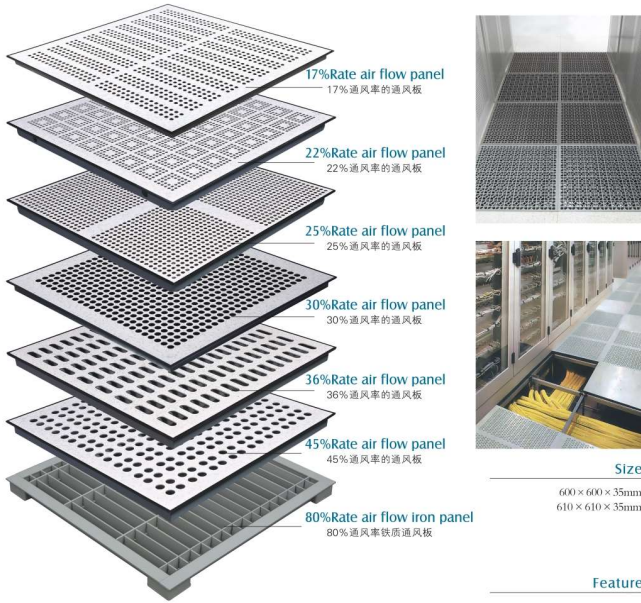


黑冰花



G655

AIR FLOW SYSTEM 通风板系列



17%Rate air flow panel
17%通风率的通风板

22%Rate air flow panel
22%通风率的通风板

25%Rate air flow panel
25%通风率的通风板

30%Rate air flow panel
30%通风率的通风板

36%Rate air flow panel
36%通风率的通风板

45%Rate air flow panel
45%通风率的通风板

80%Rate air flow iron panel
80%通风率铁质通风板



Size
600 × 600 × 35mm
610 × 610 × 35mm

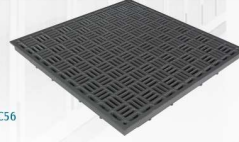
Feature

Steel perforated panel is specially designed to allow air flow through the access floor up to the equipment.
通风地板系列是专门设计应用于机房设备通风的地板。

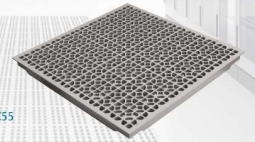
DC68



DC56



DC55



Aluminum air grille with damper
铝风口带调节器



Sliding Damper
平移式调节器



Round Damper
旋转式调节器



Opposite Blade Damper
对开式调节器



www.ztfloor.com



ZTFLOOR®

Project reference 工程案例



上海博壹研发中心大楼
Bosh Shanghai Research Center
地点(Place): 上海 Shanghai
面积(Area): 27000m²
地板类型(Panel Type): OA网络地板



上海长丰大厦
Shanghai Changfeng Building
地点(Place): 上海 Shanghai
面积(Area): 22000m²
地板类型(Panel Type): OA网络地板



上海新桥商务广场
Shanghai Xinqiao Business Center
地点(Place): 上海 Shanghai
面积(Area): 22000m²
地板类型(Panel Type): OA网络地板



上海诺华制药中心
Shanghai Novartis Pharma Center
地点(Place): 上海 Shanghai
面积(Area): 10000m²
地板类型(Panel Type): OA网络地板



龙湖上海虹桥天街
Longshu Shanghai Hongqiao Street
地点(Place): 上海 Shanghai
面积(Area): 17000m²
地板类型(Panel Type): OA网络地板



上海MODO阳光城
Shanghai MODO Sunshine City
地点(Place): 上海 Shanghai
面积(Area): 30000m²
地板类型(Panel Type): OA网络地板



上海巴克莱银行
Barclays Bank Shanghai
地点(Place): 上海 Shanghai
面积(Area): 25000m²
地板类型(Panel Type): OA网络地板



上海惠鲁工厂
Shanghai Med Office Building
地点(Place): 上海 Shanghai
面积(Area): 12000m²
地板类型(Panel Type): OA网络地板



上海杜邦办公大楼
DuPont Shanghai Office Building
地点(Place): 上海 Shanghai
面积(Area): 15000m²
地板类型(Panel Type): OA网络地板



上海绿叶制药
Shanghai green leaf pharmaceutical
地点(Place): 上海 Shanghai
面积(Area): 12000m²
地板类型(Panel Type): OA网络地板



苏州国信大厦
Suzhou Guotai Building
地点(Place): 苏州 Suzhou
面积(Area): 15000m²
地板类型(Panel Type): OA网络地板



苏州尼盛广场
Suzhou Nisheng Building
地点(Place): 苏州 Suzhou
面积(Area): 20000m²
地板类型(Panel Type): OA网络地板



上海阿斯科利康办公大楼
AnuZeeva (Shanghai) Office Building
地点(Place): 上海 Shanghai
面积(Area): 10000m²
地板类型(Panel Type): OA网络地板



上海聚沙东利制办公大楼
Shanghai Sandong East Office Building
地点(Place): 上海 Shanghai
面积(Area): 2000m²
地板类型(Panel Type): OA网络地板



上海振源电子
Shanghai Zhenyuan Electronic Co., Ltd
地点(Place): 上海 Shanghai
面积(Area): 40000m²
地板类型(Panel Type): OA网络地板



苏州国信大厦
Suzhou Guotai Building
地点(Place): 苏州 Suzhou
面积(Area): 10000m²
地板类型(Panel Type): OA网络地板



南京七景湖
Nanjing Qianqun
地点(Place): 南京 Nanjing
面积(Area): 15000m²
地板类型(Panel Type): OA网络地板



南京软件和软件园
Nanjing meib software park
地点(Place): 南京 Nanjing
面积(Area): 15000m²
地板类型(Panel Type): OA网络地板

Project reference 工程案例



北京奥迪大厦
Beijing Audi Building
地点(Place): 北京 Beijing
面积(Area): 13200m²
地板类型(Panel Type): OA网络地板



北京东方运营中心
Beijing Dong Fang operations center
地点(Place): 北京 Beijing
面积(Area): 30000m²
地板类型(Panel Type): OA网络地板



北京国贸大厦
Beijing International Trade Building or Cera Building
地点(Place): 北京 Beijing
面积(Area): 18000m²
地板类型(Panel Type): OA网络地板



浙江东方金融中心
Zhejiang Dongfang financial center
地点(Place): 浙江 Zhejiang
面积(Area): 38000m²
地板类型(Panel Type): OA网络地板



济南东纺A地块(济南中心)
Jinan Dong Fang A Block (Jinan Center)
地点(Place): 济南 Jinan
面积(Area): 22000m²
地板类型(Panel Type): OA网络地板



盐城金融城
Yancheng Financial City
地点(Place): 盐城 Yancheng
面积(Area): 145700m²
地板类型(Panel Type): OA网络地板



杭州建工大厦
Hangzhou Construction Building
地点(Place): 杭州 Hangzhou
面积(Area): 10000m²
地板类型(Panel Type): OA网络地板



杭州宝盛世纪中心
Hangzhou Binsheng Century Center
地点(Place): 杭州 Hangzhou
面积(Area): 28000m²
地板类型(Panel Type): OA网络地板



株洲高科
Zhuzhou Geoke
地点(Place): 株洲 Zhuzhou
面积(Area): 15000m²
地板类型(Panel Type): OA网络地板



天津万通大厦
Tianjin Wansong building
地点(Place): 天津 Tianjin
面积(Area): 40000m²
地板类型(Panel Type): OA网络地板



大连联通
Dalian Unicom
地点(Place): 大连 Dalian
面积(Area): 8000m²
地板类型(Panel Type): OA网络地板



大连凯丹广场
Dalian Galleria
地点(Place): 大连 Dalian
面积(Area): 12000m²
地板类型(Panel Type): OA网络地板



哈尔滨银行大厦
Harbin bank building
地点(Place): 哈尔滨 Harbin
面积(Area): 14000m²
地板类型(Panel Type): OA网络地板



成都棕榈泉国际中心
Chengde Palm Springs International Center
地点(Place): 成都 Chengdu
面积(Area): 50000m²
地板类型(Panel Type): OA网络地板



沈阳友谊时代广场
Shenyang Friendship Times Square
地点(Place): 沈阳 Shenyang
面积(Area): 20000m²
地板类型(Panel Type): OA网络地板



深圳威盛大厦
Shenzhen Wansheng Building
地点(Place): 深圳 Shenzhen
面积(Area): 30000m²
地板类型(Panel Type): OA网络地板



南昌江铃汽车
Nanchang Jiangling Automobile
地点(Place): 南昌 Nanchang
面积(Area): 30000m²
地板类型(Panel Type): 网络地板



太仓德国中心
Tianchang German Center
地点(Place): 太仓 Tangang
面积(Area): 12000m²
地板类型(Panel Type): OA网络地板

Project reference 工程案例



大连深蓝中心大楼
Dalian Deep Blue Center Building
地点(Place): 大连 Dalian
面积(Area): 40000m²
地板类型(Panel Type): 硫酸钙地板



吉林移动数据中心
Mobile Data Center in Jilin
地点(Place): 吉林 Jilin
面积(Area): 10400m²
地板类型(Panel Type): 硫酸钙地板



新疆绿城广场
Xinjiang Lvcheng Plaza
地点(Place): 新疆 Xinjiang
面积(Area): 50000m²
地板类型(Panel Type): 硫酸钙地板



南昌国际数据中心产业园
Nanchang International Data Center Industrial Park
地点(Place): 南昌 Nanchang
面积(Area): 14000m²
地板类型(Panel Type): 硫酸钙地板



深圳盘古天地运营中心
Shenzhen Pangu operation center
地点(Place): 深圳 Shenzhen
面积(Area): 8000m²/2600m²
地板类型(Panel Type): 硫酸钙地板/铝合金地板



南昌欧菲光科技
Nanchang Optoelectronic Technology
地点(Place): 南昌 Nanchang
面积(Area): 9500m²
地板类型(Panel Type): 铝合金地板



广州东风广场
Guangzhou Dongfeng Plaza
地点(Place): 广州 Guangzhou
面积(Area): 40000m²
地板类型(Panel Type): 硫酸钙地板



山东银盾云计算处理中心
Shandong Peng Silver Cloud Computing Center
地点(Place): 山东 Shandong
面积(Area): 12000m²
地板类型(Panel Type): 硫酸钙网络地板



南昌银行金融服务中心
Nanchang Bank Financial Services Center
地点(Place): 南昌 Nanchang
面积(Area): 20000m²
地板类型(Panel Type): 硫酸钙网络地板



北京电信通信指挥楼
China Telecom (Beijing) Office Building
地点(Place): 北京 Beijing
面积(Area): 15000m²
地板类型(Panel Type): HPLC防静电地板



杭州运河天地国际
The Hangzhou Canal City International
地点(Place): 杭州 Hangzhou
面积(Area): 15000m²
地板类型(Panel Type): 新型扣板



南昌绿地新都会
Nanchang Greenland Center
地点(Place): 南昌 Nanchang
面积(Area): 20000m²
地板类型(Panel Type): 新型砖网地板



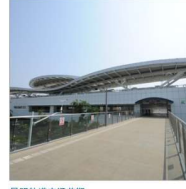
上海新理想大厦
Shanghai New Ideal Building
地点(Place): 上海 Shanghai
面积(Area): 20000m²
地板类型(Panel Type): 硫酸钙地板



深圳京基滨河时代
Shenzhen Kingley Innovation Times
地点(Place): 深圳 Shenzhen
面积(Area): 8000m²/2000m²
地板类型(Panel Type): 硫酸钙地板



呼和浩特西北高速项目
Hulunbuir northwest expressway project
地点(Place): 呼和浩特 Hohhot
面积(Area): 8000m²/2000m²
地板类型(Panel Type): 硫酸钙地板/铝合金地板



昆明轨道交通首期
Kunming rail transit
地点(Place): 昆明 Kunming
面积(Area): 8000m²
地板类型(Panel Type): 防静电地板



浙江大学国际联合学院海宁国际校区
Zhejiang University International Campus, Zhejiang University
地点(Place): 海宁 Haining
面积(Area): 7000m²
地板类型(Panel Type): 防静电地板



重庆轨道交通5号线
Chongqing metro line 5
地点(Place): 重庆 Chongqing
面积(Area): 12000m²
地板类型(Panel Type): 防静电地板